



MetroWest+

Portishead Branch Line (MetroWest Phase 1)

TR040011

Applicant: North Somerset District Council

2.32 – Crossings to be Extinguished Plans

**The Infrastructure Planning (Applications: Prescribed Forms and Procedure) Regulations 2009, regulation 5(2)(o)
Planning Act 2008**

Author: CH2M

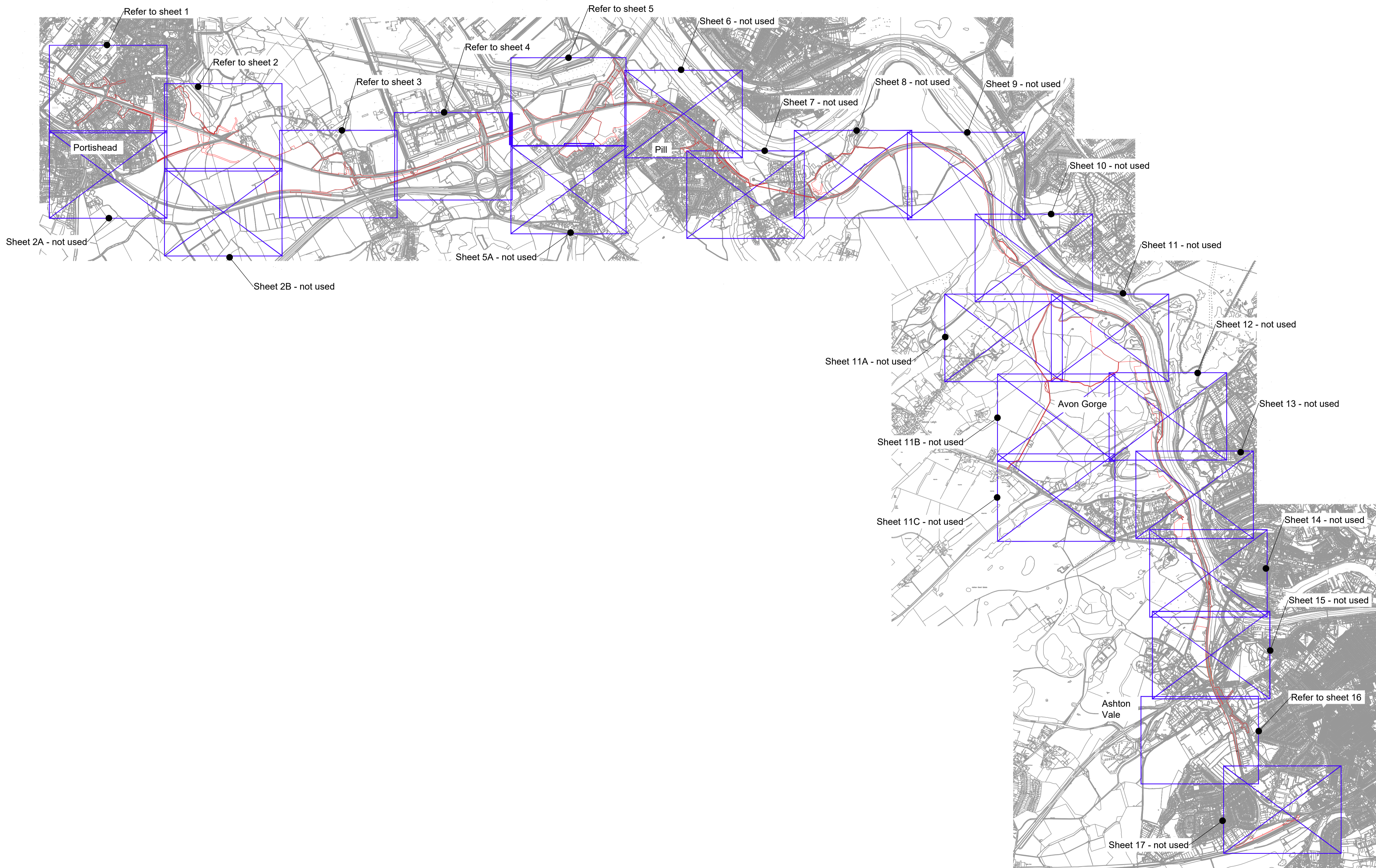
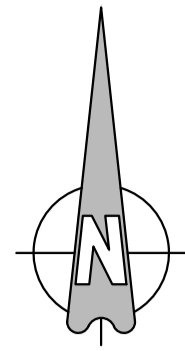
Revision: Version 3

Date: September 2021



Document Index

Version	Date	Status of Version	Document Index	Document Revision	Changes
1	19 November 2019	Application	674946.BQ.42.01-410-415 Rev E 674946.BQ.42.01-426 Rev E	-	-
2	15 March 2021		674946.BQ.42.01-410-415 Rev E 674946.BQ.42.01-426 Rev E	Rev F	Updated Order Limits
3	20 September 2021		674946.BQ.42.01-410-415 Rev F 674946.BQ.42.01-426 Rev F	Rev G	Trinity Primary School Footbridge removed from scheme Temporary diversion removed from Sheet 1



Key:
— Order Limits

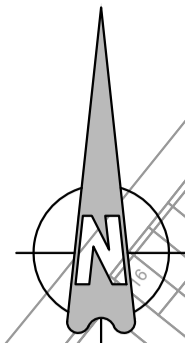
G	OHP	ADL	ADL	09/09/2021
Tripty Primary School Footbridge removed from scheme Temporary diversion removed from Sheet 1				
F	OHP	ADL	ADL	15/02/2021
Updated Order Limits				
E	FG	ADL	ADL	11/10/19
Red Line and Crossings Updated				
D	OHP	KS	ADL	12/08/2019
Minor Amendments				
C	FG	KS	ADL	31/07/2019
Red Line and Outlines Updated				
B	FG	KS	ADL	18/04/2019
Red Line Updated and Level Crossing References Added				
A	FG	KS	ADL	15/01/2019
First Issue				
Date	By	Checked	Approved	Date
Description				

travelwest
 CH2M HILL
 1 The Square Temple Quay Bristol
 BS1 6DG
 Tel +44 (0)117 910 2580
 Fax +44 (0)117 910 2581
 www.ch2m.com

ch2m
 Project
 THE PORTISHEAD BRANCH LINE
 (METROWEST PHASE 1)
 ORDER
 Drawing
 CROSSINGS
 TO BE EXTINGUISHED
 SHEET 0
 KEY PLAN

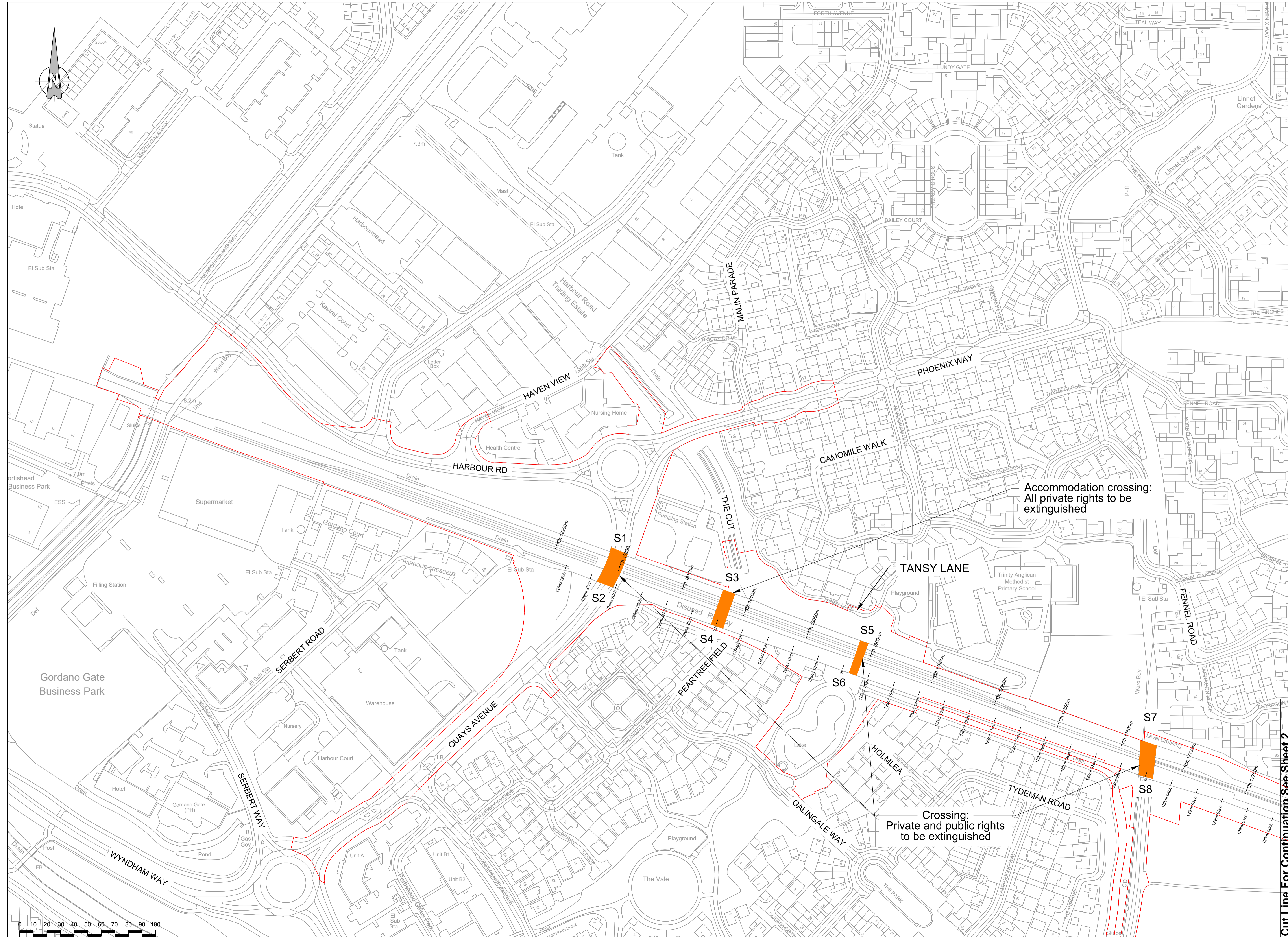
Drawn by: FG Date: 15/01/2019
 Checked by: KS Date: 15/01/2019
 Approved by: ADL Date: 15/01/2019
 674946.BQ.42.01-410 G
 Drawing Scale: 1:32000 @ A3

This map is reproduced from Ordnance Survey material by CH2M on behalf of North Somerset Council with the permission of the Controller of Her Majesty's Stationery Office, © Crown copyright. Unauthorised reproduction infringes Crown copyright and may lead to prosecution or civil proceedings. Licence Number: 100023397



Key:

- Order Limits
- Level crossing to be extinguished



Accommodation crossing:
All private rights to be extinguished

Crossing:
Private and public rights to be extinguished

G	OHP	ADL	ADL	09/09/2021
Trinity Primary School Footbridge removed from scheme Temporary diversion removed from Sheet 1				
F	OHP	ADL	ADL	15/02/2021
Updated Order Limits				
E	FG	ADL	ADL	11/19/19
Red Line and Crossings Updated				
D	OHP	KS	ADL	12/08/2019
Minor Amendments				
C	FG	KS	ADL	31/07/2019
Red Line and Outlines Updated				
B	FG	KS	ADL	18/04/2019
Red Line Updated and Level Crossing References Added				
A	FG	KS	ADL	15/01/2019
First Issue				
Drawn	By	Checked	Approved	Date

travelwest
 CH2M HILL
 1 The Square Temple Quay Bristol
 BS1 6DG
 Tel +44 (0)117 910 2580
 Fax +44 (0)117 910 2581
 www.ch2m.com

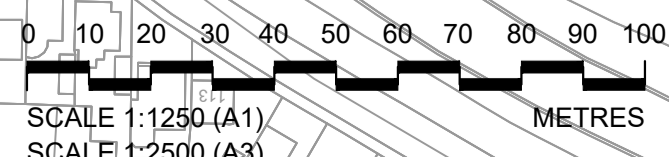
ch2m

THE PORTISHEAD BRANCH LINE
 (METROWEST PHASE 1)
 ORDER

CROSSINGS
 TO BE EXTINGUISHED
 SHEET 1
 PORTISHEAD

Drawn: FG Date: 15/01/2019
 Checked: KS Date: 15/01/2019
 Approved: ADL Date: 15/01/2019

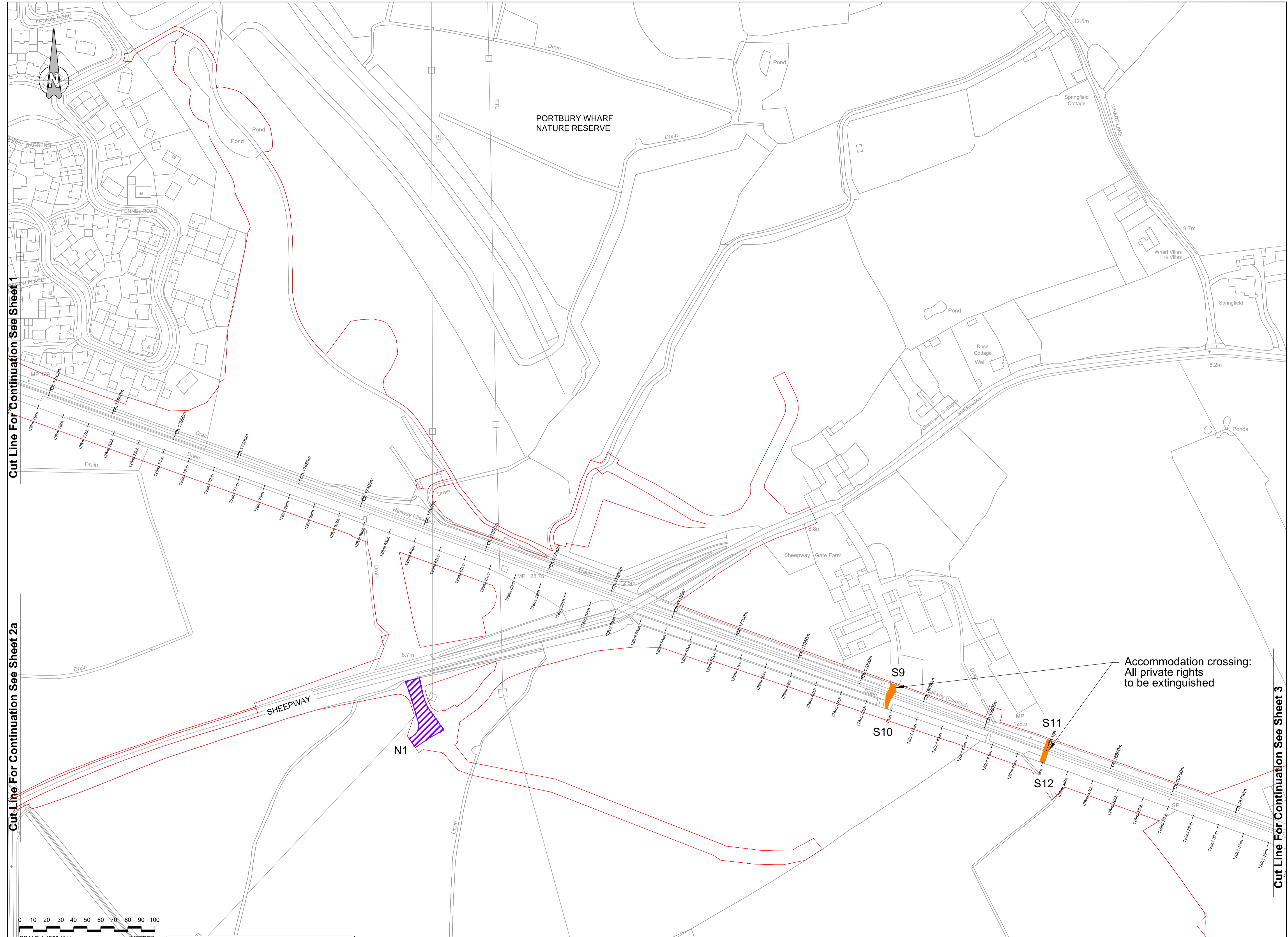
674946.BQ.42.01-411 G
 Drawing Scale: 1:2500 A3



This map is reproduced from Ordnance Survey material by CH2M on behalf of North Devon Council with the permission of the Controller of Her Majesty's Stationery Office. © Crown copyright. Unauthorised reproduction infringes Crown copyright and may lead to prosecution or civil liability. Licence Number: 10002397

Cut Line For Continuation See Sheet 2

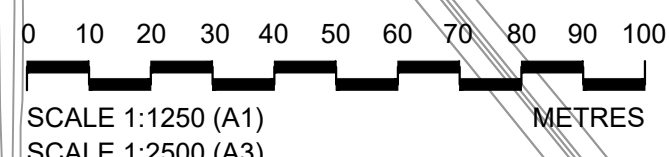
- Key:**
- Order Limits
 - Level crossing to be extinguished
 - Improvements to agricultural access



Cut Line For Continuation See Sheet 1

Cut Line For Continuation See Sheet 2a

Cut Line For Continuation See Sheet 3



This map is reproduced from Ordnance Survey material by CH2M on behalf of with the permission of the Controller of Her Majesty's Stationery Office. © Crown copyright. Unauthorised reproduction infringes Crown copyright and may lead to prosecution or civil proceedings. Licence Number: 100023397

Cut Line For Continuation See Sheet 2b

G	OHP	ADL	ADL	09/09/2021
Twin Primary School Footbridge removed from scheme Temporary diversion removed from Sheet 1				
F	OHP	ADL	ADL	15/02/2021
Updated Order Limits				
E	FG	ADL	ADL	11/19/19
Red Line and Crossings Updated				
D	OHP	KS	ADL	12/08/2019
Minor Amendments				
C	FG	KS	ADL	31/07/2019
Red Line and Outlines Updated				
B	FG	KS	ADL	18/04/2019
Red Line Updated and Level Crossing References Added				
A	FG	KS	ADL	15/01/2019
First Issue				
Drawn by	By	Checked	Approved	Date

travelwest
 CH2M HILL
 1 The Square Temple Quay Bristol
 BS1 6DG
 Tel +44 (0)117 910 2580
 Fax +44 (0)117 910 2581
 www.ch2m.com

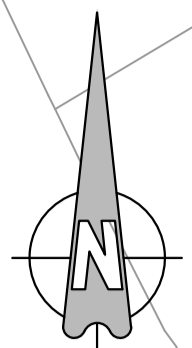
ch2m

Project
THE PORTISHEAD BRANCH LINE (METROWEST PHASE 1) ORDER

Drawings
CROSSINGS TO BE EXTINGUISHED SHEET 2 SHEEPWAY

Drawn by	FG	Drawn	15/01/2019
Checked by	KS	Checked	15/01/2019
Approved by	ADL	Approved	15/01/2019

674946.BQ.42.01-412 G
 Drawing Scale: 1:2500 @ A3



Key:

- Order Limits
- Level crossing to be extinguished
- New Access

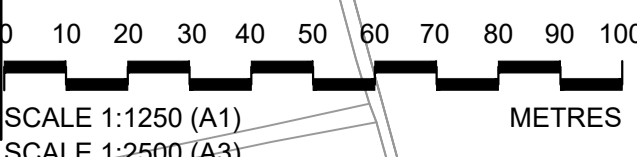
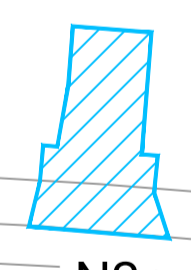
Cut Line For Continuation See Sheet 2

Cut Line For Continuation See Sheet 4

Occupation crossing:
All private rights
to be extinguished

Accommodation crossing:
All private rights to be
extinguished

THE PORTBURY HUNDRED
CONSTRUCTION COMPOUND



This map is reproduced from Ordnance Survey material by CH2M on behalf of North Somerset Council with the permission of the Controller of Her Majesty's Stationary Office, © Crown copyright. Unauthorised reproduction infringes Crown copyright and may lead to prosecution or civil proceedings. Licence Number: 100023397

G	OMP	ADL	ADL	09/09/2021
Tisbury Primary School Footbridge removed from scheme Temporary diversion removed from Sheet 1				
F	OMP	ADL	ADL	15/02/2021
Updated Order Limits				
E	FG	ADL	ADL	11/19/19
Red Line and Crossings Updated				
D	OMP	KS	ADL	12/08/2019
Minor Amendments				
C	FG	KS	ADL	31/07/2019
Red Line and Outlines Updated				
B	FG	KS	ADL	18/04/2019
Red Line Updated and Level Crossing Reference Added				
A	FG	KS	ADL	15/01/2019
First Issue				
Drawn	By	Check	Approved	Date

travelwest
South West Railways Limited, a subsidiary of Network Rail

CH2M HILL
 1 The Square Temple Quay Bristol
 BS1 6DG
 Tel +44 (0)117 910 2580
 Fax +44 (0)117 910 2581
 www.ch2m.com

ch2m

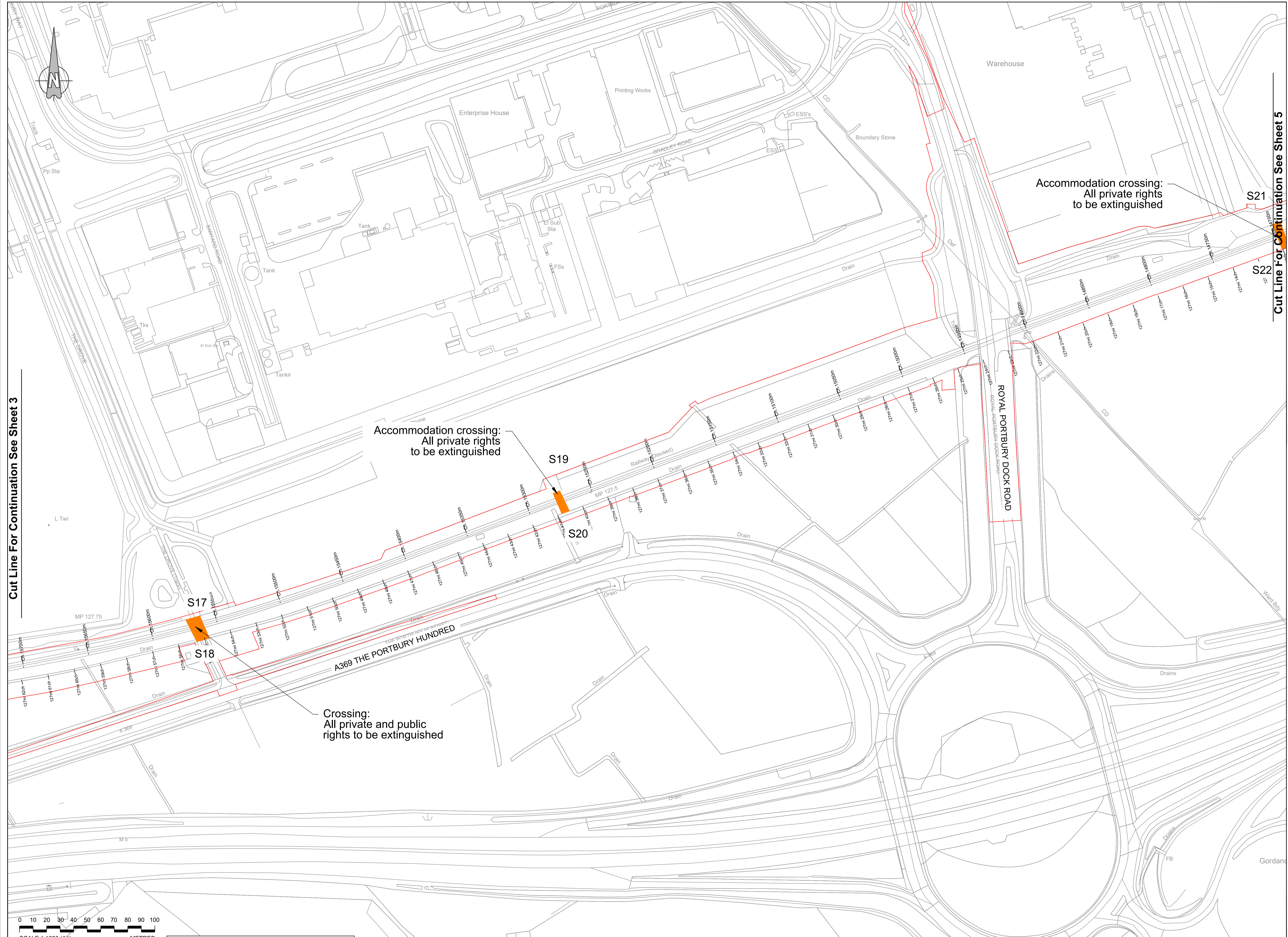
Project
**THE PORTISHEAD BRANCH LINE
 (METROWEST PHASE 1)
 ORDER**

Contents
**CROSSINGS
 TO BE EXTINGUISHED
 SHEET 3
 OLD PORTBURY STATION**

Drawn by	FG	Issue	15/01/2019
Checked by	KS	Drawn	15/01/2019
Approved by	ADL	Issue	15/01/2019

674946.BQ.42.01-413 G
 Drawing Scale: 1:2500 @ A3

Key:
 Order Limits
 Level crossing to be extinguished



Cut Line For Continuation See Sheet 5

Cut Line For Continuation See Sheet 3

G	OHP	ADL	ADL	09/09/2021
F	OHP	ADL	ADL	15/02/2021
E	FG	ADL	ADL	11/10/19
D	OHP	KS	ADL	12/08/2019
C	FG	KS	ADL	31/07/2019
B	FG	KS	ADL	18/04/2019
A	FG	KS	ADL	15/01/2019

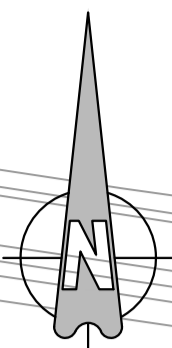
travelwest
 CH2M HILL
 1 The Square Temple Quay Bristol
 BS1 6DG
 Tel +44 (0)117 910 2580
 Fax +44 (0)117 910 2581
 www.ch2m.com

ch2m

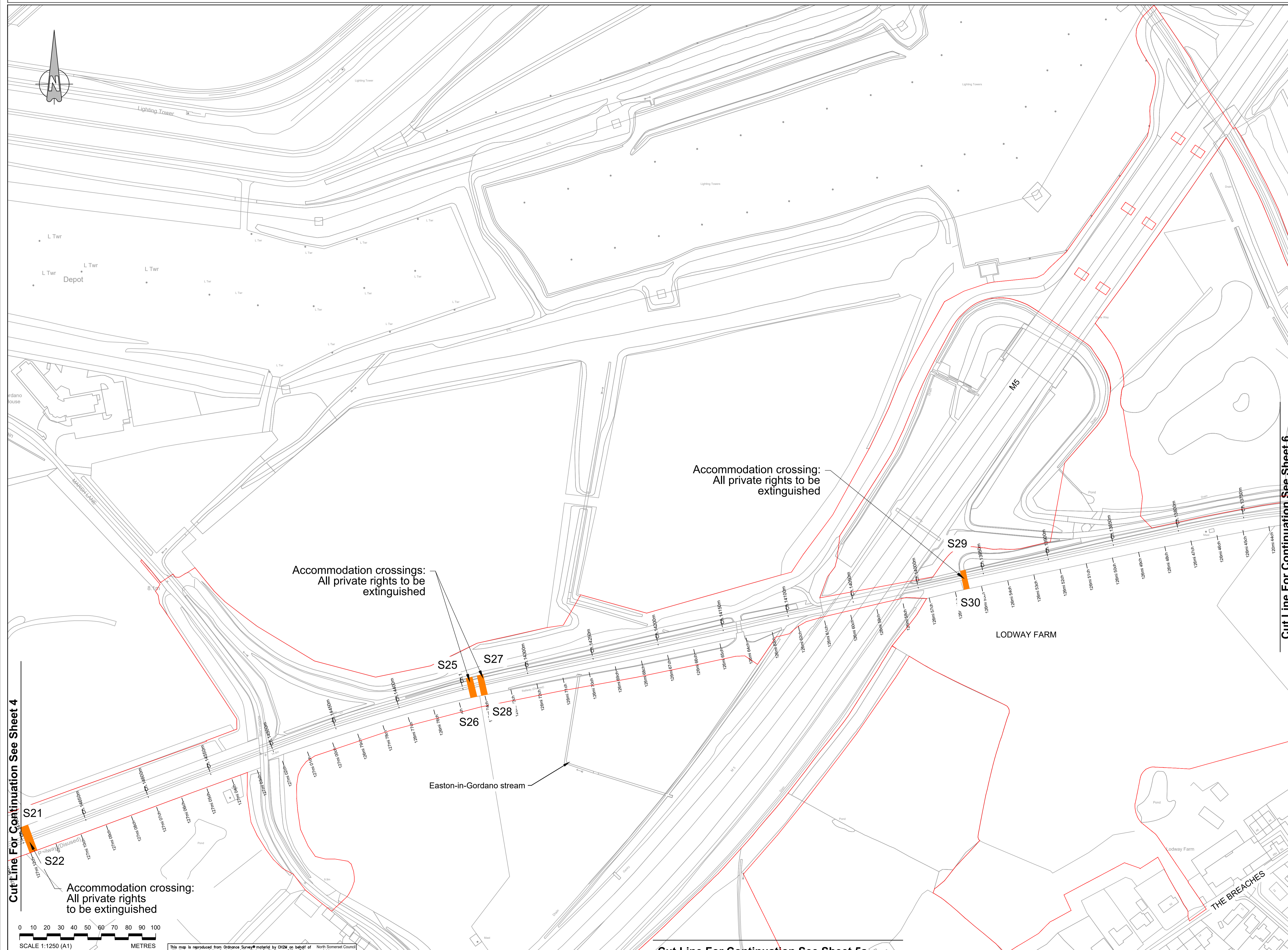
Project: THE PORTISHEAD BRANCH LINE (METROWEST PHASE 1) ORDER
 Sheet: CROSSINGS TO BE EXTINGUISHED SHEET 4 JUNCTION 19
 Drawing No: 674946.BQ.42.01-414
 Scale: 1:2500 @ A3

0 10 20 30 40 50 60 70 80 90 100
 SCALE 1:1250 (A1)
 SCALE 1:2500 (A3)
 METRES

This map is reproduced from Ordnance Survey material by CH2M on behalf of with the permission of the Controller of Her Majesty's Stationary Office. © Crown copyright. Unauthorised reproduction infringes Crown copyright and may lead to prosecution or civil proceedings. Licence Number: 100023397



Key:
 Order Limits
 Level crossing to be extinguished



Cut Line For Continuation See Sheet 4

Cut Line For Continuation See Sheet 6

0 10 20 30 40 50 60 70 80 90 100
 SCALE 1:1250 (A1)
 SCALE 1:2500 (A3)
 METRES

This map is reproduced from Ordnance Survey material by CH2M on behalf of North Somerset Council with the permission of the Controller of Her Majesty's Stationery Office. © Crown copyright. Unauthorised reproduction infringes Crown copyright and may lead to prosecution or civil proceedings. Licence Number: 100023397

Cut Line For Continuation See Sheet 5a

G	OHP	ADL	ADL	09/09/2021
F	OHP	ADL	ADL	15/02/2021
E	FG	ADL	ADL	11/19/19
D	OHP	KS	ADL	12/08/2019
C	FG	KS	ADL	31/07/2019
B	FG	KS	ADL	18/04/2019
A	FG	KS	ADL	15/01/2019
First Issue				
Drawn	By	Checked	Approved	Date

travelwest
 CH2M HILL
 1 The Square Temple Quay Bristol
 BS1 6DQ
 Tel +44 (0)117 910 2580
 Fax +44 (0)117 910 2581
 www.ch2m.com

ch2m

Project
THE PORTISHEAD BRANCH LINE (METROWEST PHASE 1) ORDER

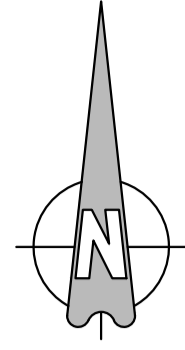
Drawn by: FG Date: 15/01/2019
 Checked by: KS Date: 15/01/2019
 Approved by: ADL Date: 15/01/2019

674946.BQ.42.01-415 G

Drawing Scale: 1:2500 @ A3

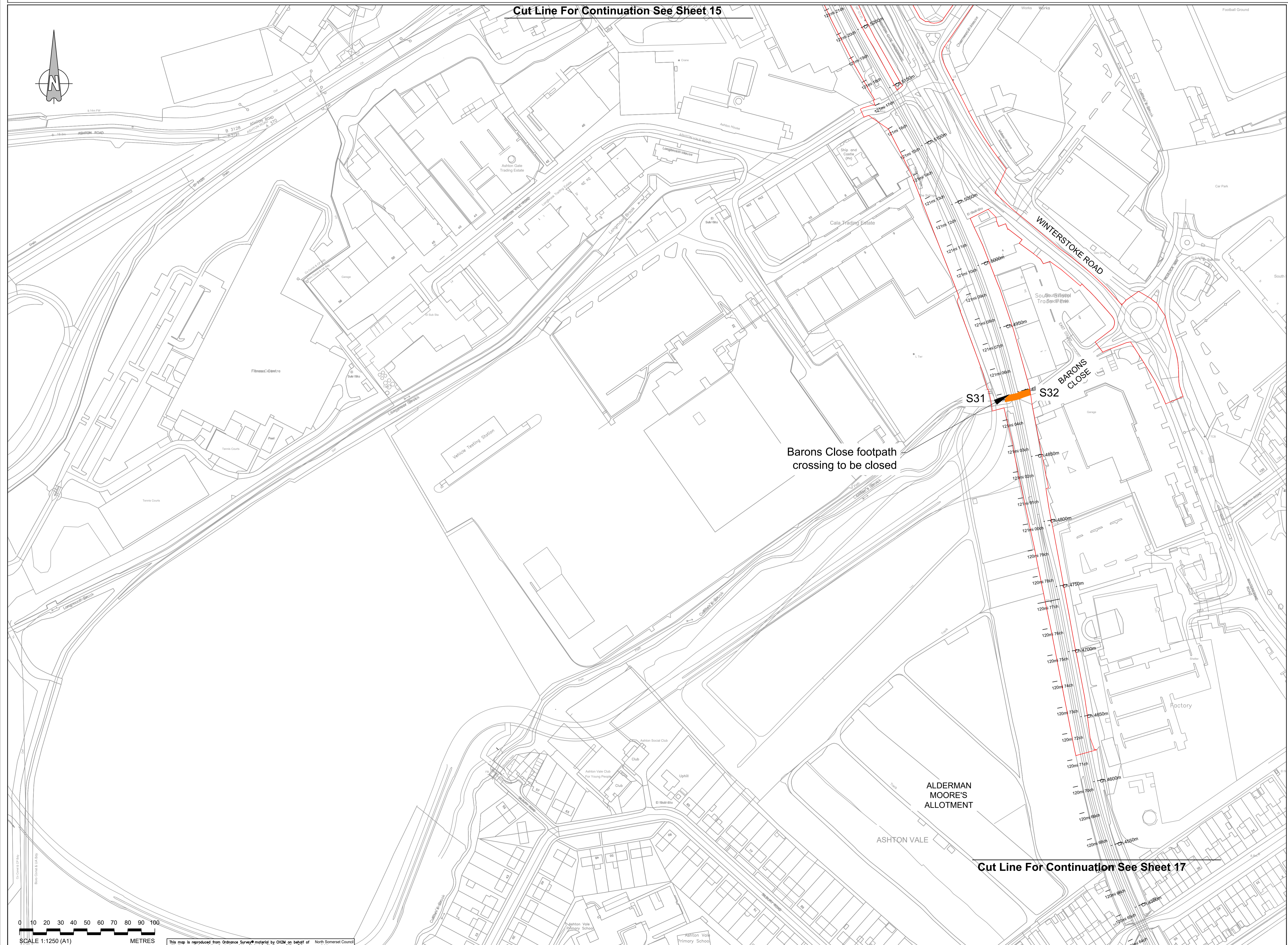
CROSSINGS TO BE EXTINGUISHED SHEET 5 M5 OVERBRIDGE

Cut Line For Continuation See Sheet 15



Key:

- Order Limits
- Level crossing to be extinguished



Cut Line For Continuation See Sheet 17

G	OHP	ADL	ADL	09/09/2021
Tisbury Primary School Footbridge removed from scheme Temporary diversion removed from Sheet 1				
F	OHP	ADL	ADL	15/02/2021
Updated Order Limits				
E	FG	ADL	ADL	11/19/19
Red Line and Crossings Updated				
D	OHP	KS	ADL	12/08/2019
Minor Amendments				
C	FG	KS	ADL	31/07/2019
Red Line and Outlines Updated				
B	FG	KS	ADL	18/04/2019
Red Line Updated and Level Crossing Reference Added				
A	FG	KS	ADL	15/01/2019
First Issue				
Date	By	Check	Approved	Date

travelwest
South West Railway Limited

CH2M HILL
 1 The Square Temple Quay Bristol
 BS1 6DG
 Tel +44 (0)117 910 2580
 Fax +44 (0)117 910 2581
 www.ch2m.com

ch2m
CONSTRUCTION

Project
THE PORTISHEAD BRANCH LINE (METROWEST PHASE 1) ORDER

Drawings
CROSSINGS TO BE EXTINGUISHED SHEET 16 ASHTON VALE

Drawn by: FG Date: 15/01/2019
 Checked by: KS Date: 15/01/2019
 Approved by: ADL Date: 15/01/2019

674946.BQ.42.01-426 G
 Drawing Scale: 1:2500 @ A3

0 10 20 30 40 50 60 70 80 90 100
 SCALE 1:1250 (A1)
 SCALE 1:2500 (A3)
 METRES

This map is reproduced from Ordnance Survey material by CH2M on behalf of with the permission of the Controller of Her Majesty's Stationery Office, © Crown copyright. Unauthorised reproduction infringes Crown copyright and may lead to prosecution or civil proceedings. Licence Number: 100023397